



The Effective  
Cover Systems  
For Open  
Clarifying Basins



**COVERHEX**  
Floating Cover Technologies

[www.coverhex.com](http://www.coverhex.com)

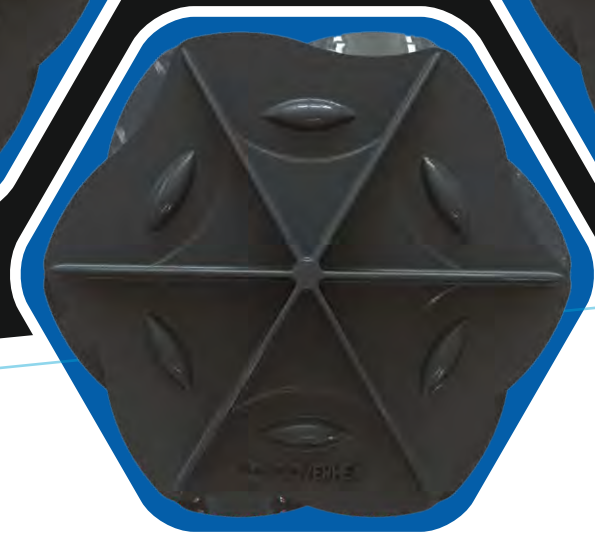
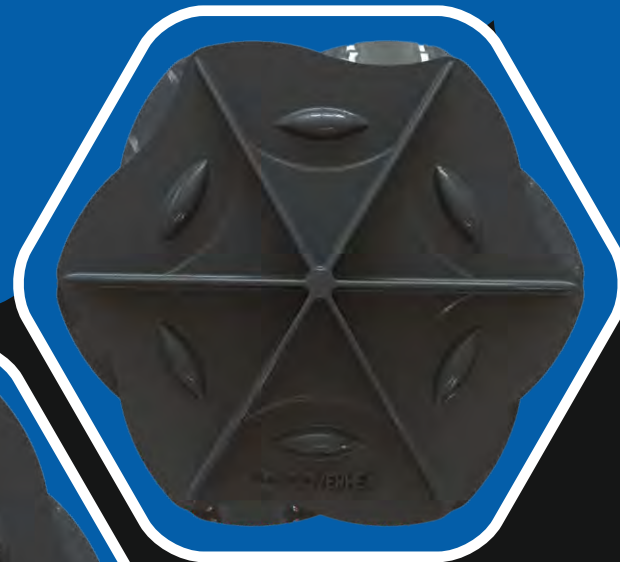
**SEGMENTAL  
FLOATING COVERS**

# THERE IS SOMETHING IN THE AIR...

Uncovered clarifying basins – a lot of stench, trouble with neighbours and the environment. These times are over: the CoverHex Concept reduces odour emission up to 90%!

And this in a particularly simple, quick and economical way: without static load on the basin and approved construction measures. Because the CoverHex elements automatically spread on the surface and then float together thereby establishing a tight cover.

The CoverHex Highlight  
The air is clean!



**COVERHEX**  
Floating Cover Technologies  
[www.coverhex.com](http://www.coverhex.com)



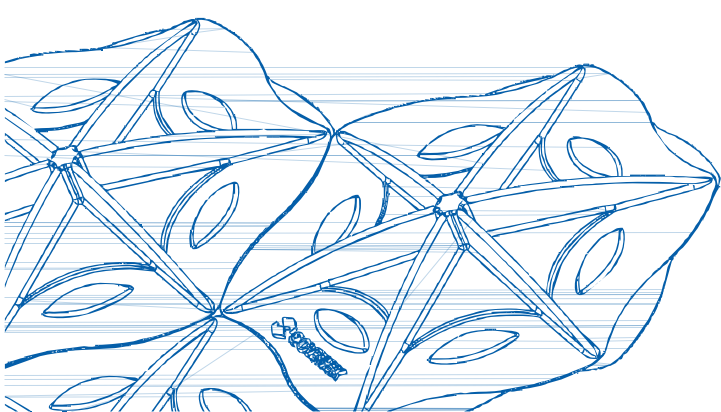
The unique and patented CoverHex® Floating Cover is perfect on almost any form of fluid surface and is the ideal solution for controlling such things as:

- ✓ Odor
- ✓ Emission
- ✓ Heat loss
- ✓ UV effect
- ✓ Evaporation
- ✓ Organic growth

Further, the CoverHex® Floating Cover deters unwanted waterfowls from landing on covered waters (what significantly reduces sedimentation, risk of E. coli).

Since its launch in 2010, CoverHex® Floating Cover has been chosen for a vast number of installations globally, making the CoverHex® Floating Cover the market leading solution.

Today CoverHex® Floating Cover is used on almost all forms of basins, lagoons, reservoirs, containers, ponds and tanks.



### CoverHex®

- ✓ Is the solid, robust and long lasting solution
- ✓ Has no weak spots, no blow- / injection holes
- ✓ Has no hollow areas (that eventually will break)
- ✓ Withstand rain, snow and frost
- ✓ Has no openings (that eventually will clog due to sand, debris, algae etc.)



**The applications are many  
and include among others**

**Water**

**Wastewater**

**Raw & drinking water**

**Cooling & Processwater**

**Recovery water**

**Irrigation water**

**Tailings Ponds**

**LS, PLS, Refino**

**Oil & Gas**

**Spill-Over tanks**

**Emergency tanks**

**Frac Water tanks**

**Boil Feed Water**

**Industry**

**Leachate**

**Decoction**

**Chemicals**

**Agriculture**

**Storage tanks at i.e. Biogas Plants**

**Manure and slurry tanks, lagoons etc.**

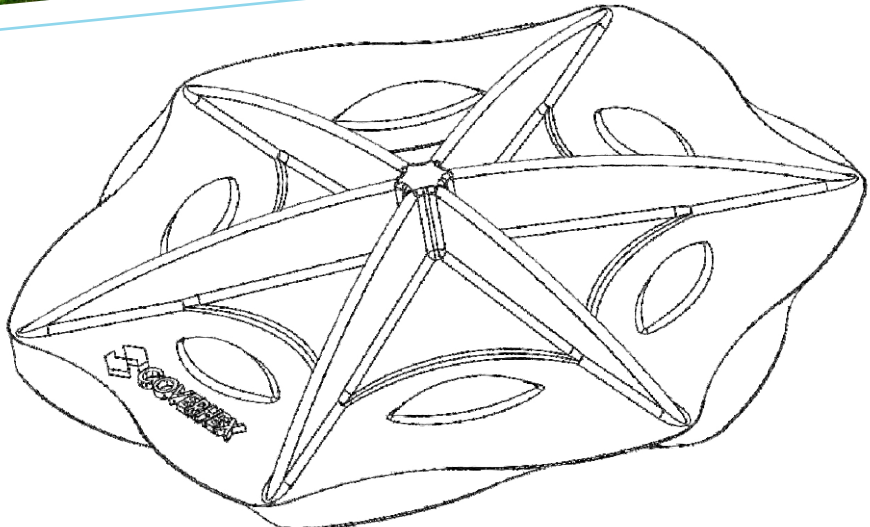
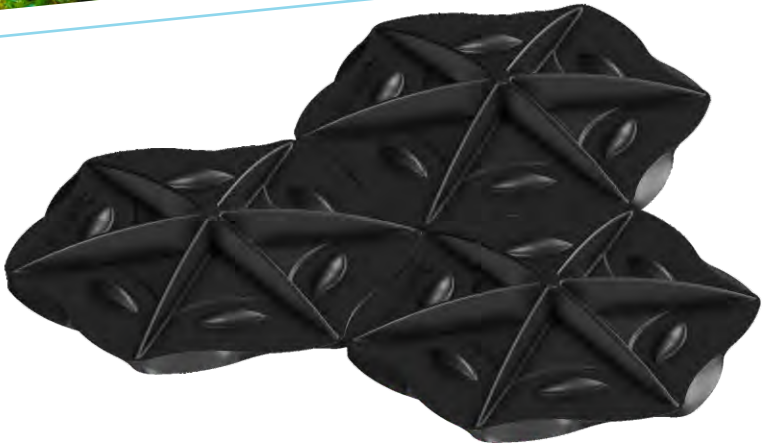


**CoverHex® Floating Cover ensures**

- Up to 99% coverage of the surface area**
- Up to 95% reduction of evaporation**
- Up to 96% reduction of emission**
- Up to 96% reduction of odor**
- Noticeable reduction in organic growth**
- Noticeable reduction in heat loss (heatflux reduced by 74%)**

**CoverHex® Floating Cover is manufactured of recycled Polypropylene, without use of Freon or other harmful materials.**

**CoverHex® Floating Cover is solid and robust and as such offers a long lifespan free of maintenance, service and repair.**





**90% ODOUR REDUCTION**  
**99% LESS ALGAE FORMATION**  
**100% ENVIRONMENT-FRIENDLY**

The CoverHex closes the surface of your open clarifying basin almost 100%, and at the same time it ensures massive reduction: up to 90% less odour emission – 99% less algae formation.

CoverHex elements are 100% environment-friendly: they work without expenditure on energy, and they are made entirely of recycled plastic. Made material is practically indestructible and can be used for at least 25 years.

**The CoverHex Check**  
Experience the results of this successful system!

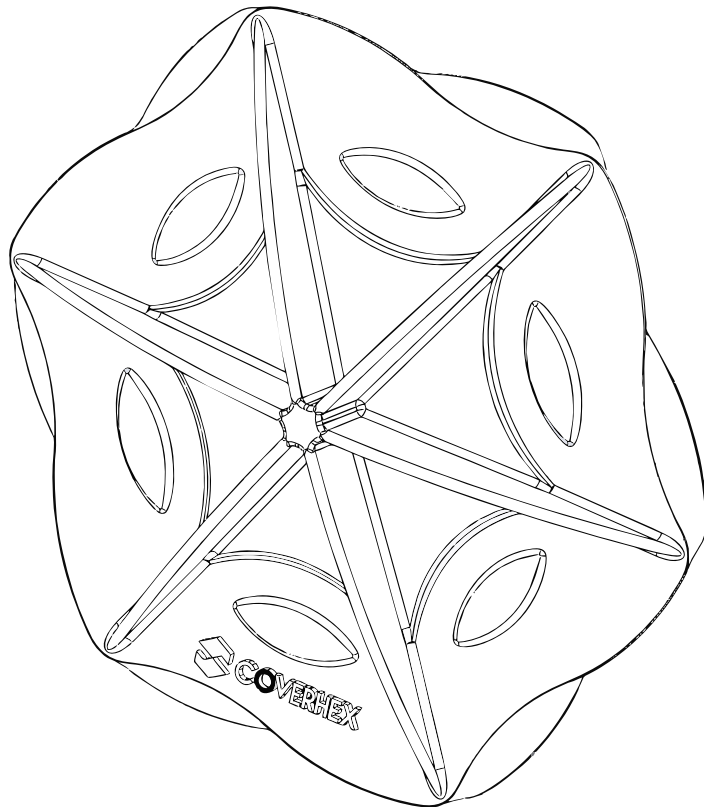
# COVERHEXS DIRECTLY FROM THE BAG

From the big bag directly onto the surface

Quick and easy: Just drop the UV protected CoverHex elements from the big bag directly into the reservoir or into the clarifying basin.

The clever construction ensures that the CoverHex elements will spread on the surface, and then float and then together like a puzzle, thereby establishing a tight and flexible cover.

The CoverHex Construction: Your complete solution - once and for all!



## CoverHex<sup>®</sup> Floating Cover Features & Benefits:

- ✓ Ease of installation
- ✓ Installation in both full and empty tank
- ✓ Automatic distribution on the fluid surface
- ✓ Automatic adaption to changes in the level
- ✓ Fits to all shapes and geometries
- ✓ Easy adaption to changes in surface area
- ✓ Unlimited access to the liquid
- ✓ No running cost

- ✓ No repair cost
- ✓ No maintenance cost
- ✓ Needs no supervision
- ✓ Unaffected by rain, snow and frost
- ✓ Allows use of aeration
- ✓ Favourable price
- ✓ 10 years warranty
- ✓ 25 years expected lifetime





**Fully covered surface**

**The cover elements  
automatically float together  
and establish a tight cover.**



## **BELOW THE WATER SURFACE: STIRING, PUMPING, SUCKING**

**Above the water surface: no unpleasant smell**

**Exactly that is the CoverHex Highlight: CoverHex elements always stay on top and cannot dive. If an agitator is used below the water surface in the reservoir or in the clarifying basin, the covers remain on the surface and automatically form a tight cover again when the stirring has ended.**

**Thanks to the diameter of 313 mm, the covers are no obstacles for 25 cm drains and pumps: they simply slide aside - smooth and safe.**

**CoverHex Competence  
Developed and manufactured by specialists  
for the prevention of odour emission**

<b>Model</b>	<b>HD 10</b>
<b>Diagonal Measure</b>	<b>254 mm</b>
<b>Height</b>	<b>70 mm</b>
<b>Weight</b>	<b>267 gram</b>
<b>Weight per m<sup>2</sup></b>	<b>6,408 m<sup>2</sup></b>
<b>Pcs per m<sup>2</sup></b>	<b>24 pie</b>
<b>Big Bag</b>	<b>1,0 mt x1,3 mt x2,5 mt</b>
<b>Surface Area</b>	<b>45 m<sup>2</sup></b>
<b>Weight</b>	<b>300 kg</b>



<b>Model</b>	<b>HD 8</b>
<b>Diagonal Measure</b>	<b>203 mm</b>
<b>Height</b>	<b>50 mm</b>
<b>Weight</b>	<b>132 gram</b>
<b>Weight per m<sup>2</sup></b>	<b>5,016 m<sup>2</sup></b>
<b>Pcs per m<sup>2</sup></b>	<b>38 pie</b>
<b>Big Bag</b>	<b>1,0 mt x1,3 mt x2,5 mt</b>
<b>Surface Area</b>	<b>55 m<sup>2</sup></b>
<b>Weight</b>	<b>280 kg</b>



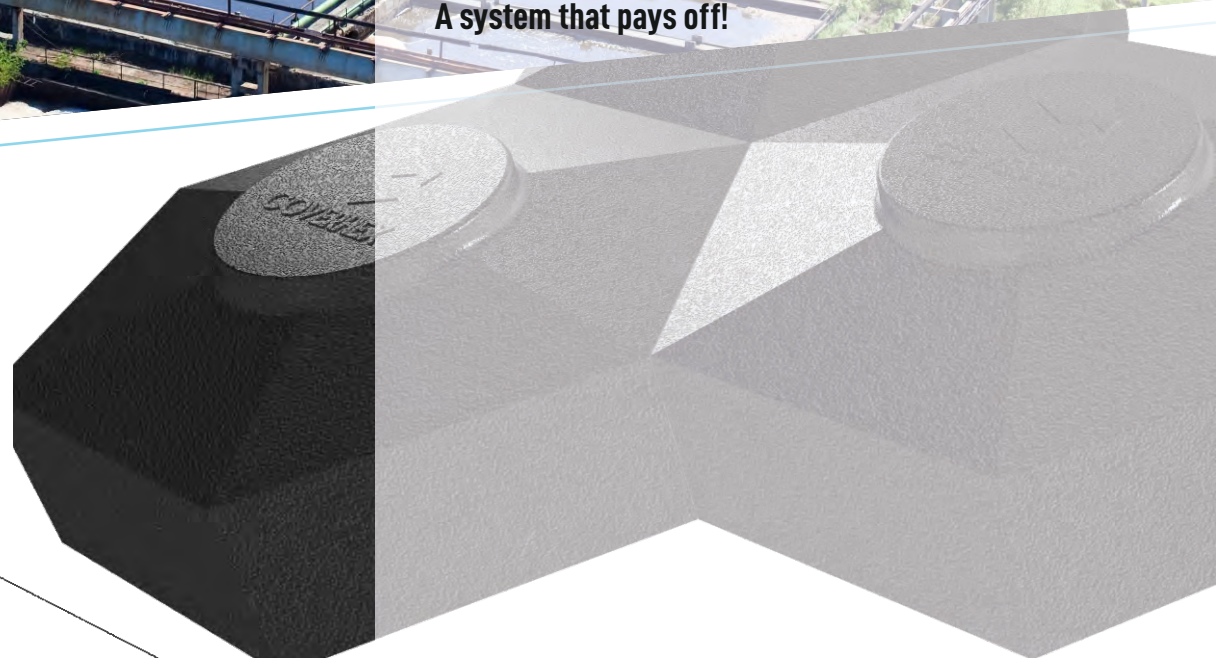
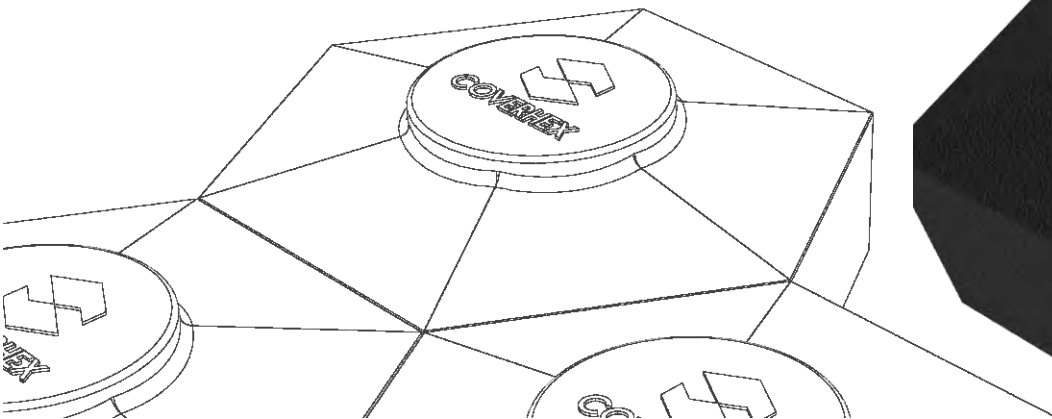
## **NO MAINTAINANCE, NO OPERATING COSTS**

**The instant solution which lasts for 25 years at least.**

**Those who are familiar with the challenges and requirements of the waste water industry can develop and implement professional solutions. The developers and manufacturers of the CoverHex are experienced and qualified experts in the areas water, soil and air, and they know what is going on.**

**Optimal function and convincing economy ensured by the CoverHex system easily and permanently meet the constantly growing requirements for the environment. With the CoverHex you are always safe - you can use additional covers at any time when expanding or remove elements on smaller surfaces. And the minimum lifespan of 25 years speaks for itself.**

**The CoverHex Construction  
A system that pays off!**



An aerial photograph of a wastewater treatment plant. The image shows several large, circular aeration tanks arranged in a curved path. Each tank contains a central metal structure with a rotating platform. The water in the tanks is a dark blue-grey color. The surrounding area is green with grass and some trees. In the foreground, there is a concrete wall and a paved path. The image is overlaid with several semi-transparent blue hexagons of varying sizes, some of which contain faint, lighter images of the same scene. The text is centered within one of the larger hexagons.

**Simply from the big bag directly onto the surface**

**The cover elements automatically float together and prevent odour emission.**

**Big Bag delivery and installation**



**Big Bag delivery and installation**



**Big Bag delivery and installation**



**Big Bag delivery and installation**



**Big Bag delivery and installation**



**Big Bag delivery and installation**



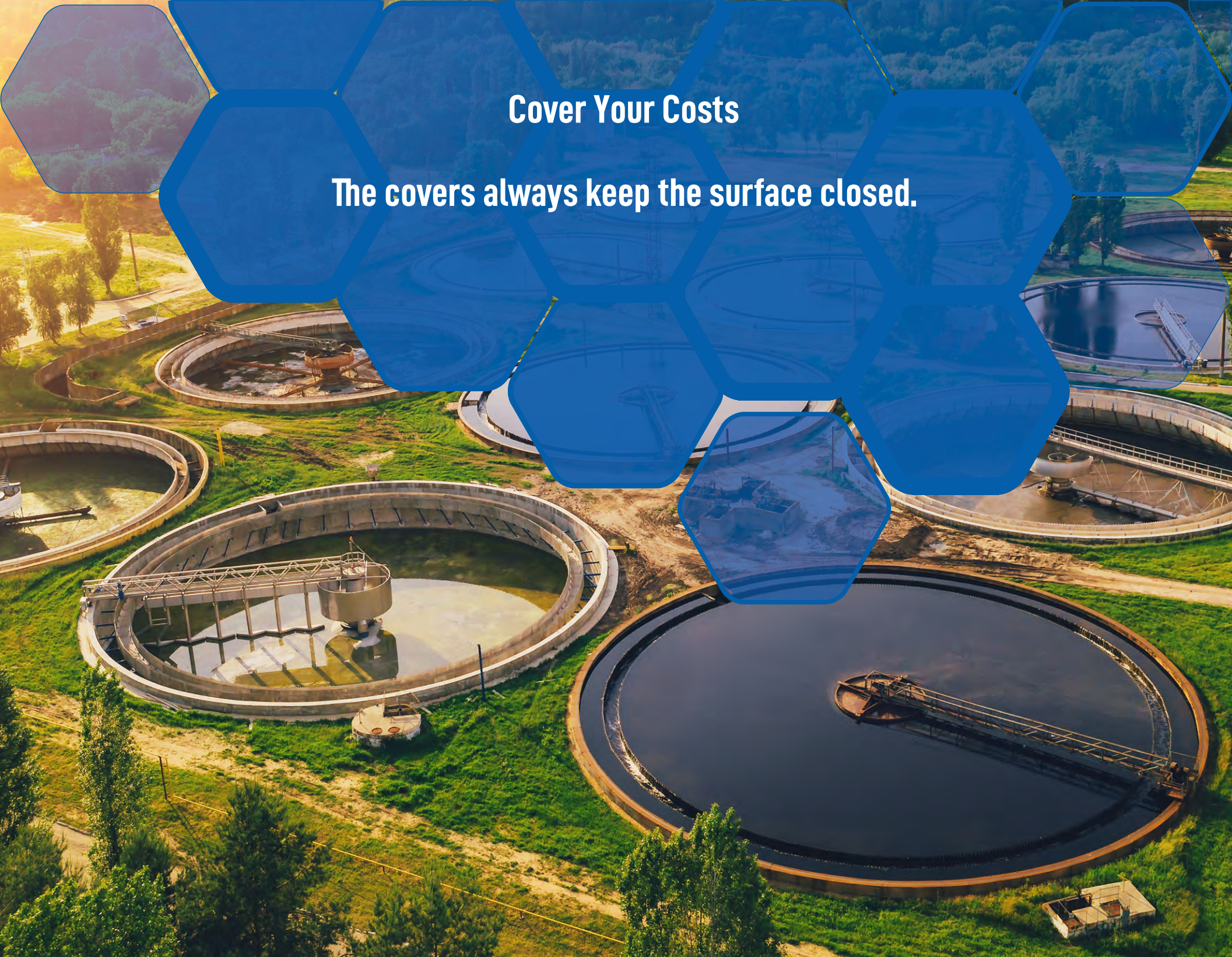
**Water intake or water outlet to or from the clarifying basin**

**The covers always keep the surface closed.**



## Cover Your Costs

The covers always keep the surface closed.





# YOU CANNOT ELIMINATE THE TOPIC OF ODOUR EMISSION

But you can remove unpleasant smell from the air

Developed and manufactured in **TURKEY** - unsurpassed in quality, durability and environmental friendliness. There is a reason why the European environmental technology is considered exemplary – with the CoverHex you meet the highest international standards. Scientifically proven: up to **90%** less odour emission – **99%** less algae formation. And who would value these features more than you?

Talk to us: we are happy to provide you with further information and references.

**The CoverHex Contact**

**The Fastest Way To The Best Solution!**



# COVERHEX

Floating Cover Technologies

Designer | Engineer | Manufacturer

Coverhex Floating Cover Technologies & Engineering Co.



Dubai South Business Center Dubai – U. A. E.



+971 50 711 6450



[sales@coverhex.com](mailto:sales@coverhex.com)



[www.coverhex.com](http://www.coverhex.com)